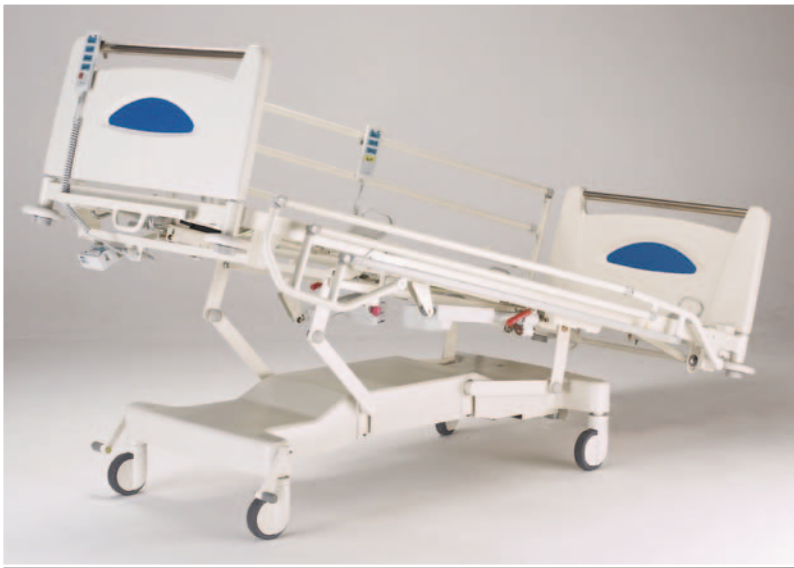


# CONTOURA® 460, 480



Four-Section Electric Profiling Beds with Electric Tilt

# CONTOURA® 460, 480

The **Contoura® 460** and **Contoura® 480** electric profiling beds are highly versatile, general-purpose support surfaces. The fully electric operation of the beds allows effortless patient positioning, which greatly reduces moving and handling risks.

The patented **Pro-Contour™** profiling mechanism gives superior pressure, shear and friction reduction in comparison to conventional profiling beds.

This enhances patient comfort and helps to reduce the risk of pressure ulcer development.

The beds have a flexible, modular design, allowing easy tailoring to suit specific needs, areas and budgets. The Contoura 460 and 480 beds have the same features except for the safe working load. Contoura 460 has a safe working load of 180kg (28 stone). Contoura 480 has a safe working load of 267kg (42 stone), to allow safe, effective management of heavier patients.



## EFFORTLESS ELECTRIC TILT

Enhanced chair position at the touch of a button, for

- Reduced moving and handling risks
- Improved clinical outcomes
- Enhanced patient comfort and well-being



Low height of 40cm allows easier transfer/mobilisation



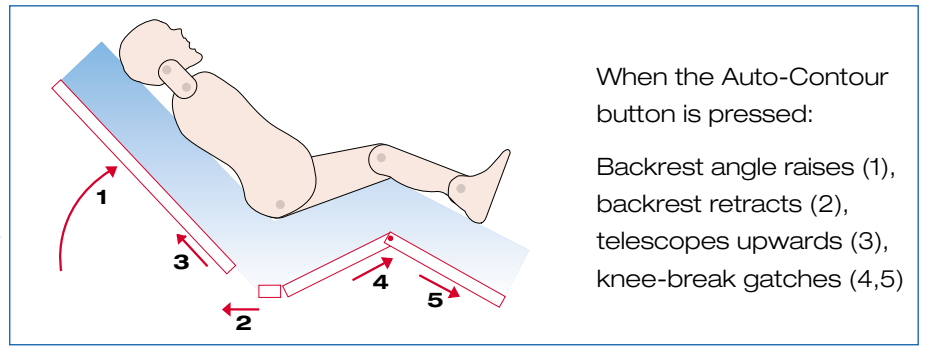
Smooth surfaces for easy cleaning



Removable deck sheets for easy cleaning/maintenance



### PRO-CONTOUR - 5 MOVEMENTS



### AUTO-CONTOUR - A SINGLE BUTTON FOR

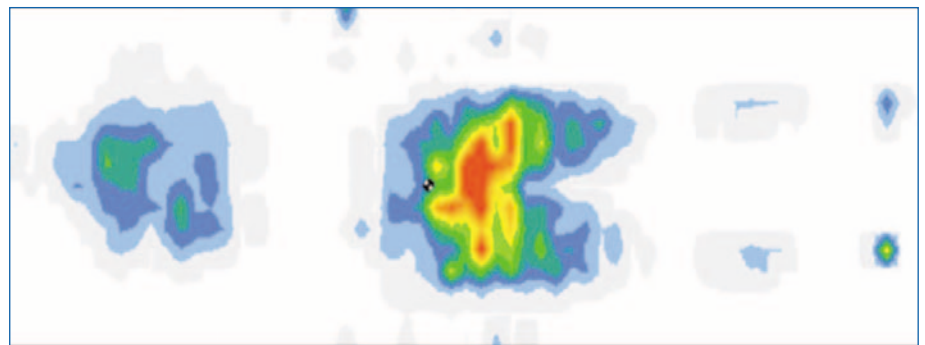
- Upright position
- *Pro-Contour* profiling

### REDUCED RISK OF PRESSURE ULCERS

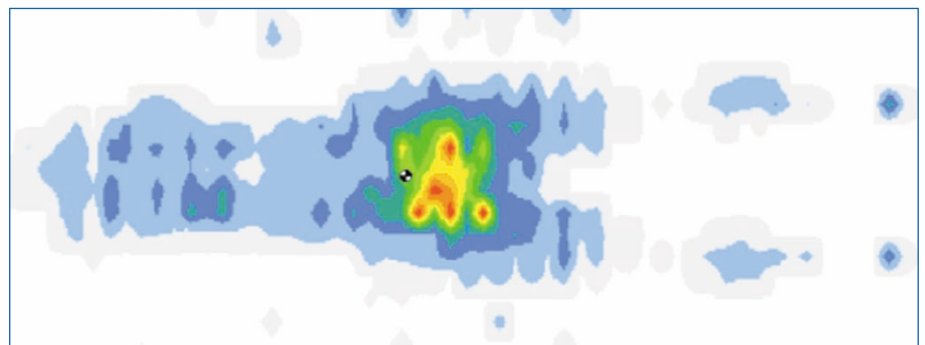
The unique *Pro-Contour* profiling system consists of 5 simultaneous mattress platform movements. It mimics the way a person's tissues stretch as they move from a supine to sitting position, and offers major benefits over conventional profiling beds:

- Enhanced pressure, shear and friction reduction
- Excellent postural support
- Reduced abdominal strain
- Improved comfort

### CONVENTIONAL BED - FULLY PROFILED

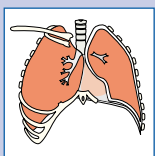


### CONTOURA 460/480 - FULLY PROFILED

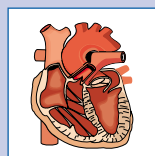


### IMPROVED CLINICAL OUTCOMES

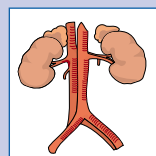
Earlier upright positioning and mobilisation helps to reduce complications of immobility and actively benefits major body systems:



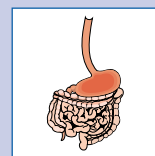
- Improved lung function
- Reduced risk of chest infection



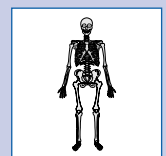
- Reduced cardiac workload
- Improved cardiac output



- Improved urinary drainage
- Reduced risk of infection



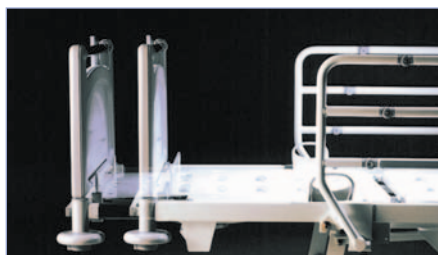
- Improved gut motility
- Improved nutrient absorption



- Reduced muscle wastage
- Joint flexibility maintained

## Standard Features

- Electrically operated backrest, knee-break, height and tilt adjustment
- *Pro-Contour* profiling
- Auto-Contour-one button upright positioning
- Battery back-up
- Nurse and patient handsets
- Handset lockout facility
- Dual-sided fast drop manual CPR levers
- Auto-CPR
- Gas spring assisted calf section adjustment
- Built-in bed extension with mattress retainer
- Pull-out bed stripper
- Removable head and foot ends
- Perforated dimple sheet mattress platform
- Moulded plastic base cover
- Linked braking/steering system
- 125mm single-wheel castors
- 150mm under bed clearance



Integral bed extension with mattress retainer

## Benefits

- Effortless patient positioning, reduced moving and handling risks
- Reduced risk of pressure ulcers, improved postural support
- Ease of use, increased patient independence, earlier upright positioning and mobilisation
- Ability to change patient's position in absence of mains power
- Ease of use, tilt under nurse control only for enhanced patient safety
- Enhanced patient safety
- Rapid repositioning in emergency
- Effortless, rapid levelling of bed from any position
- Easy adjustment of heels raised or lowered for optimal clinical management
- Full use of calf section when bed is extended
- In-bed shelf for linen, reducing cross-infection risks
- Easy to clean, easy patient access
- Perforations aid with mattress ventilation, sheets removable in sections for easy cleaning
- Easy to clean
- Excellent manoeuvrability and steering, secure braking enhances patient safety
- Excellent manoeuvrability
- Full length hoist access



Compatible with Huntleigh mattresses

## Optional Features

- X-ray translucent backrest and cassette carrier
- 150mm single - or twin-wheel castors
- No bed extension
- Integral <sup>3</sup>/<sub>4</sub> length folding safety sides
- ABS plastic mattress platform
- Range of head and foot ends

Please refer to the Contoura® 460/480 options brochure for further details.

## Accessories

A wide range of Accessories are available. Please contact Huntleigh Healthcare for details

## TECHNICAL DETAILS

Overall length	221cm (87")
Overall length (extended)	239cm (94")
Overall width (with sides)	103cm (40 <sup>1</sup> / <sub>2</sub> "
Height range	40 – 80cm (15 <sup>3</sup> / <sub>4</sub> " - 31 <sup>1</sup> / <sub>2</sub> "
Tilt range	
Head-down	0 to 17°
Foot-down	0 to 17°
Backrest angle (maximum)	65°
Calf section elevation (maximum)	37°
Safe working load	
Contoura 460	180kg/396lbs
Contoura 480	267kg/587lbs

## ELECTRICAL DATA

Power in	1.5A max at 230V a.c. 50/60 Hz
Electrical shock protection	Class 1, Type B
Liquid ingress protection	IP54
Batteries	2 x 12V series connected, sealed, rechargeable, lead/acid gel 1.2 amp hrs.

## HUNTLEIGH HEALTHCARE LIMITED

## Nesbit Evans Products Division

310-312 Dallow Road, Luton,  
Bedfordshire, LU1 1TD, United Kingdom  
**T:** +44 (0)1582 413104 **F:** +44 (0)1582 459100  
**E:** sales.admin@huntleigh-healthcare.com  
 Rental 24hr Helpline Lo-call **T:** 08457 342000  
**W:** www.huntleigh-healthcare.com

Registered No: 942245 England. Registered Office: As Above.

©Huntleigh Healthcare Limited 2003